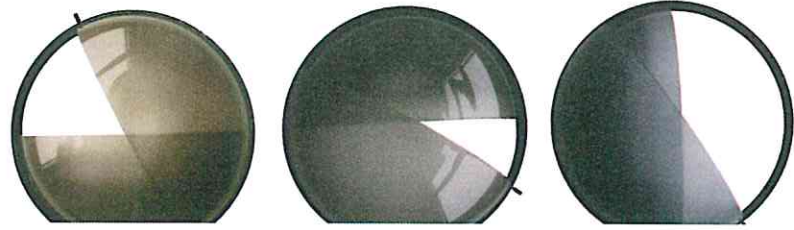


GEMVISIONS

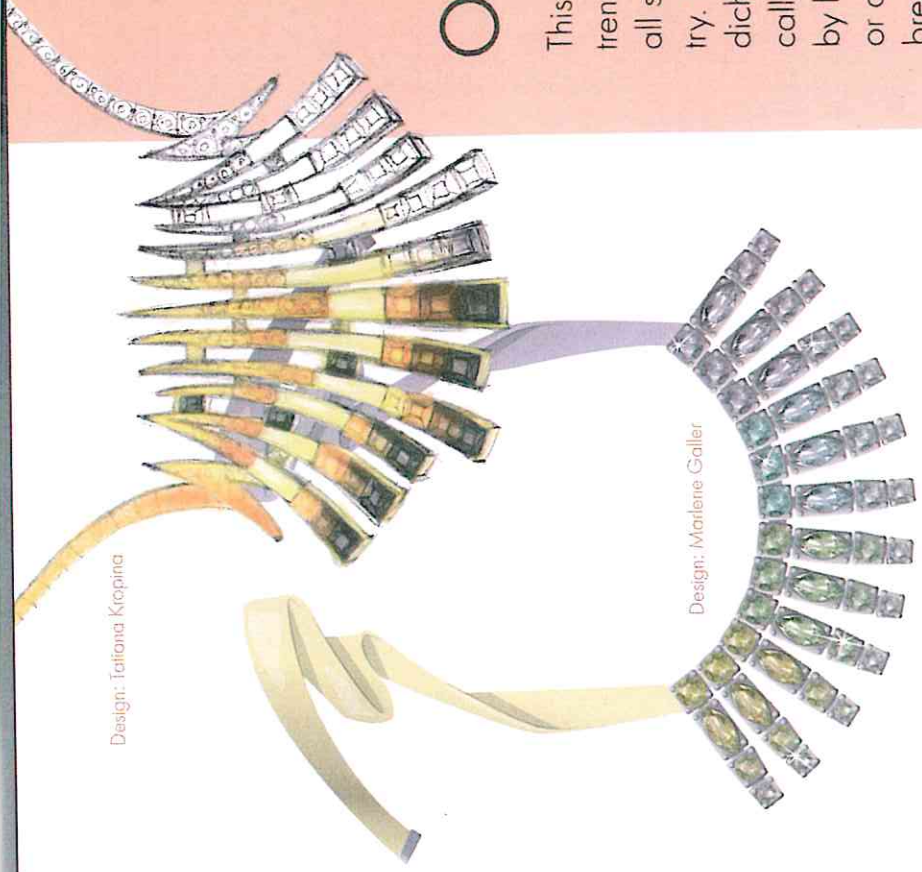
TREND DIRECTIONS 2017



SWAROVSKI
GEMSTONES™



Design: Tatiana Kropina



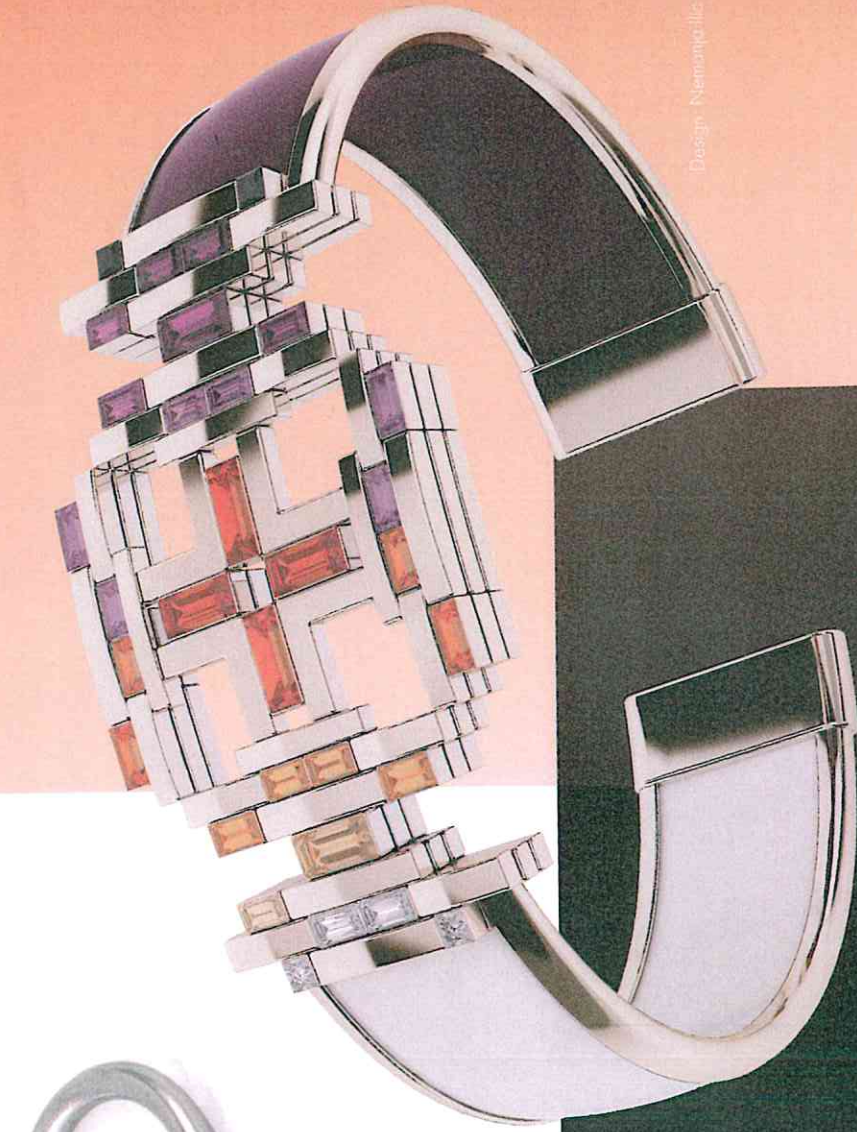
Design: Marlene Galler

ombre effect

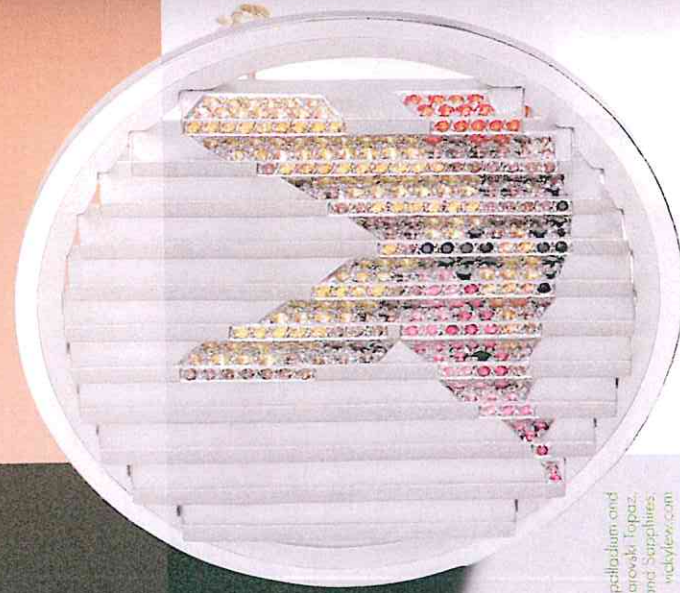
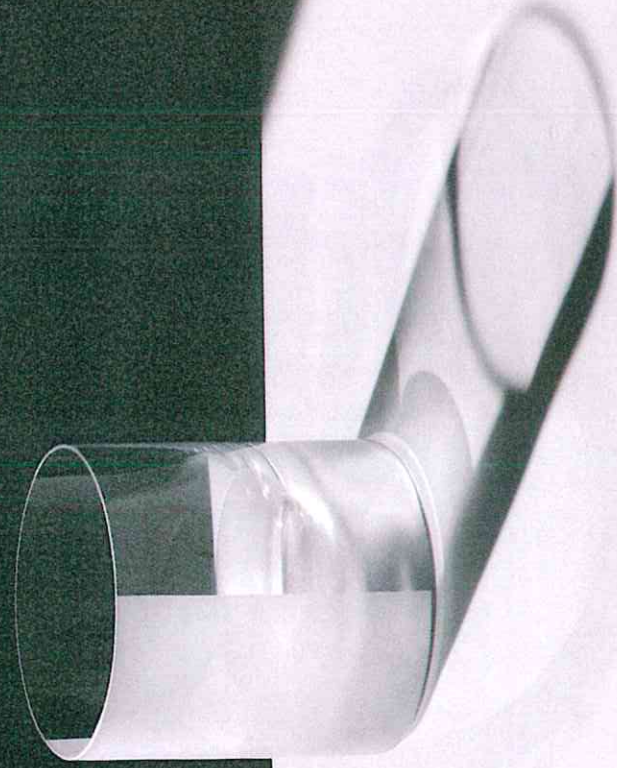
This is an appealing, versatile and commercial trend with a wealth of creative possibilities for all sectors and categories of the jewelry industry. Gemstones and metals are bi-colored or dichromatic. Beads shade or change dramatically from dark to light. The concept is defined by high-contrast color, with gradual degrade or ombre effects and more defined color breaks working to achieve a dip-dyed effect.



Design: Bing by Cand Fokini, candofokini.com



Design: Nemanovic



Brooch by Vicki Lew, in palladium and 18k yellow gold, Swarovski Topaz, Smokey Quartz and Sapphires, vickylew.com